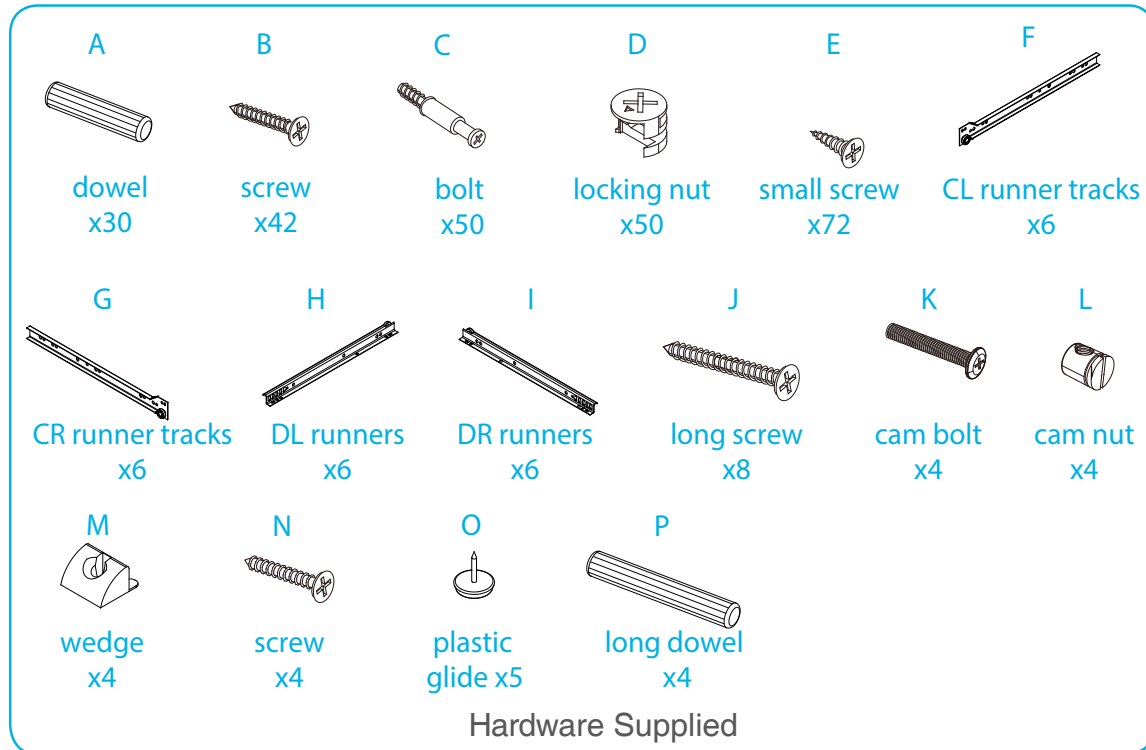


Jesse Six Drawer

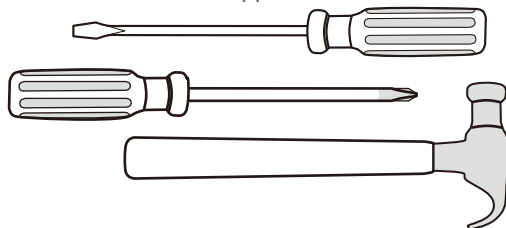
Assembly Instructions

Thank you for your purchase.

Please follow the instructions below for correct assembly.



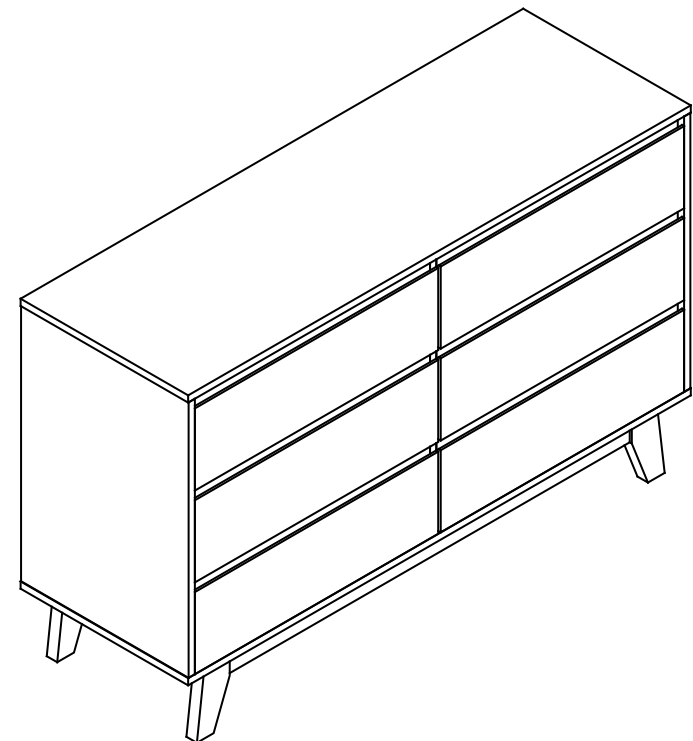
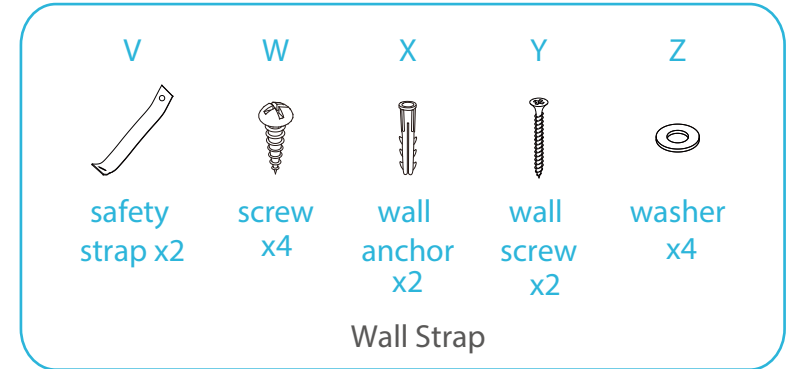
WARNING: Any furniture that is not anchored to a wall has the potential to tip over in certain circumstances, i.e. if a child attempts to climb up on the furniture or in the event of an earthquake. Accordingly, we recommend that all furniture is anchored to a wall. We supply a free safety wall anchor with all furniture sold and we recommend these are used to prevent your product tipping. The fixing device provided should fit most wall types, but please note that different wall materials may require different fixing devices from those supplied.



Phillips & Flathead screwdrivers
and hammer required

For quicker assembly, we recommend the
use of a power drill on a low-speed setting.

mocka

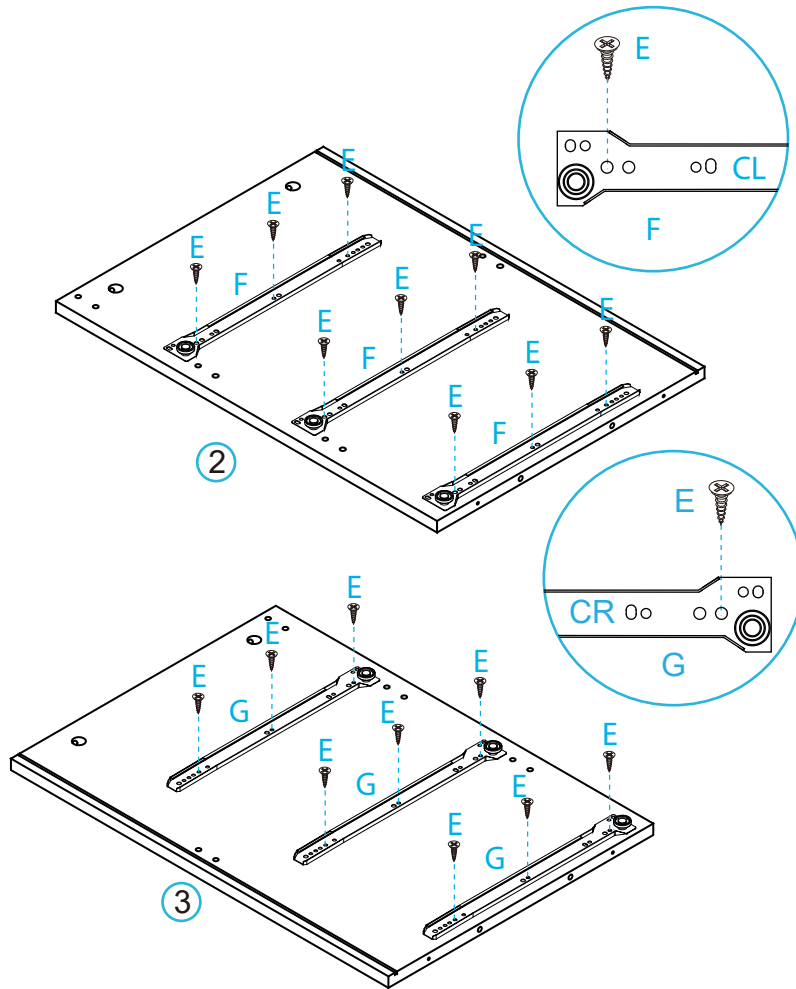


Jesse Six Drawer

Assembly Instructions

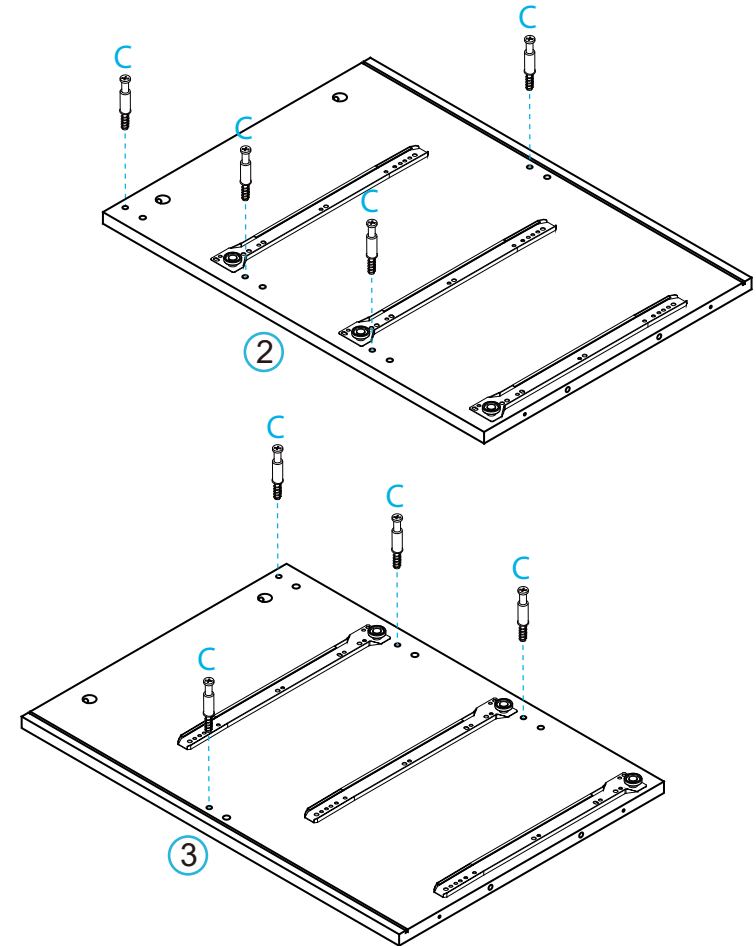
mocka

1



Attach 3x CL runner tracks (F) and 3x CR runner tracks (G) to panels [2] and [3] as shown with 18x screws (E). Tighten with a screwdriver.

2

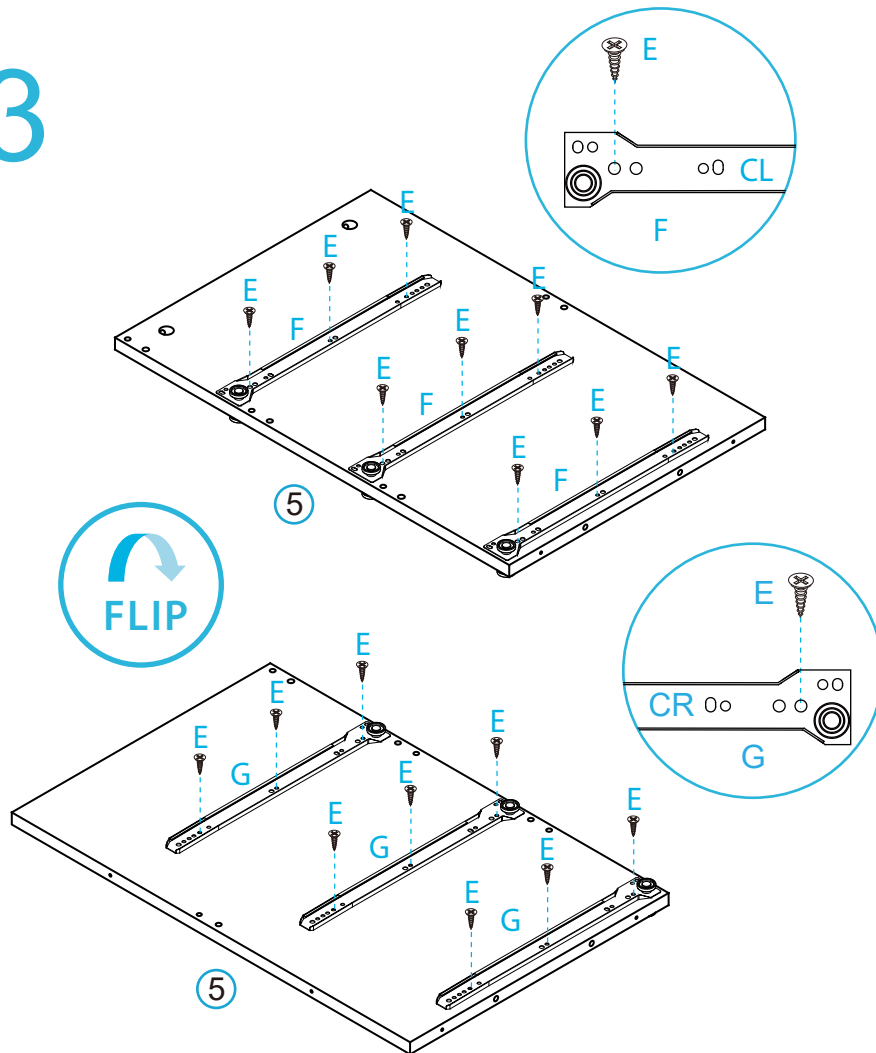


Insert 8x bolts (C) into panels [2] and [3]. Tighten with a screwdriver.

Jesse Six Drawer

Assembly Instructions

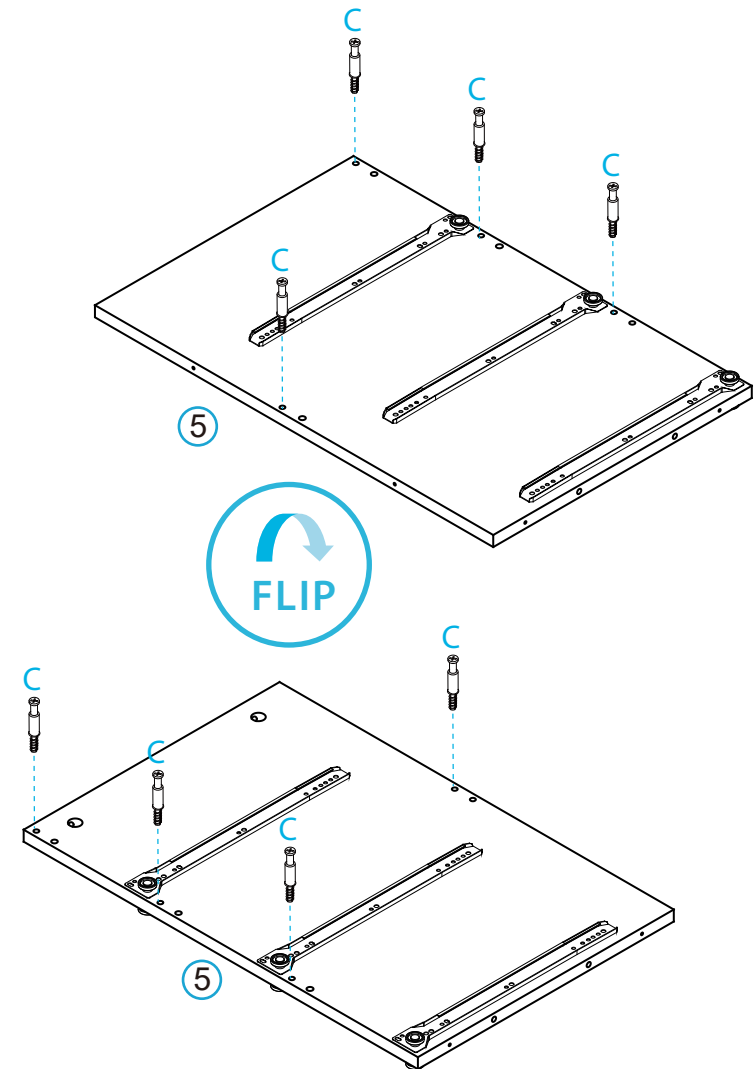
3



Attach 3x CL runner tracks (F) to panel [5] as shown with 9x screws (E). Flip the panel [5], attach 3x CR runner tracks (G) to panel [5] as shown with 9x screws (E). Tighten with a screwdriver.

mocka

4

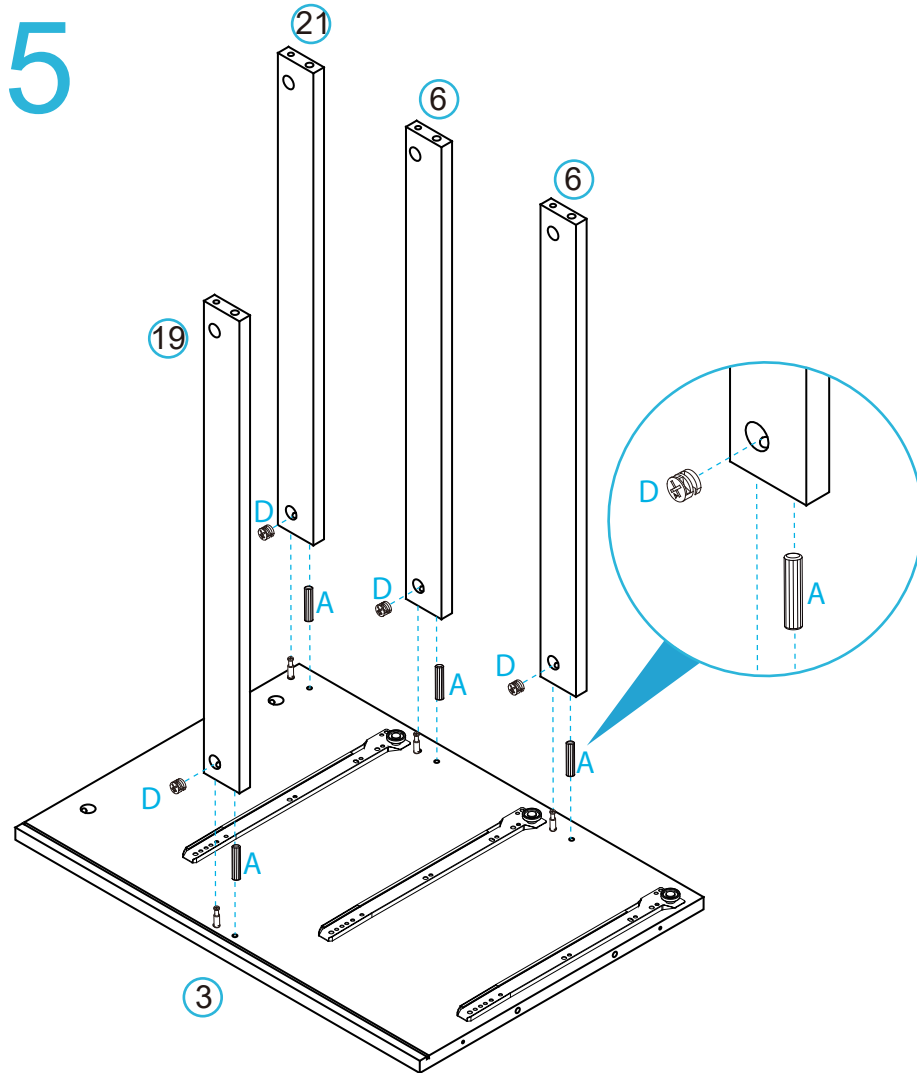


Insert 8x bolts (C) into panel [5] as shown. Tighten with a screwdriver.

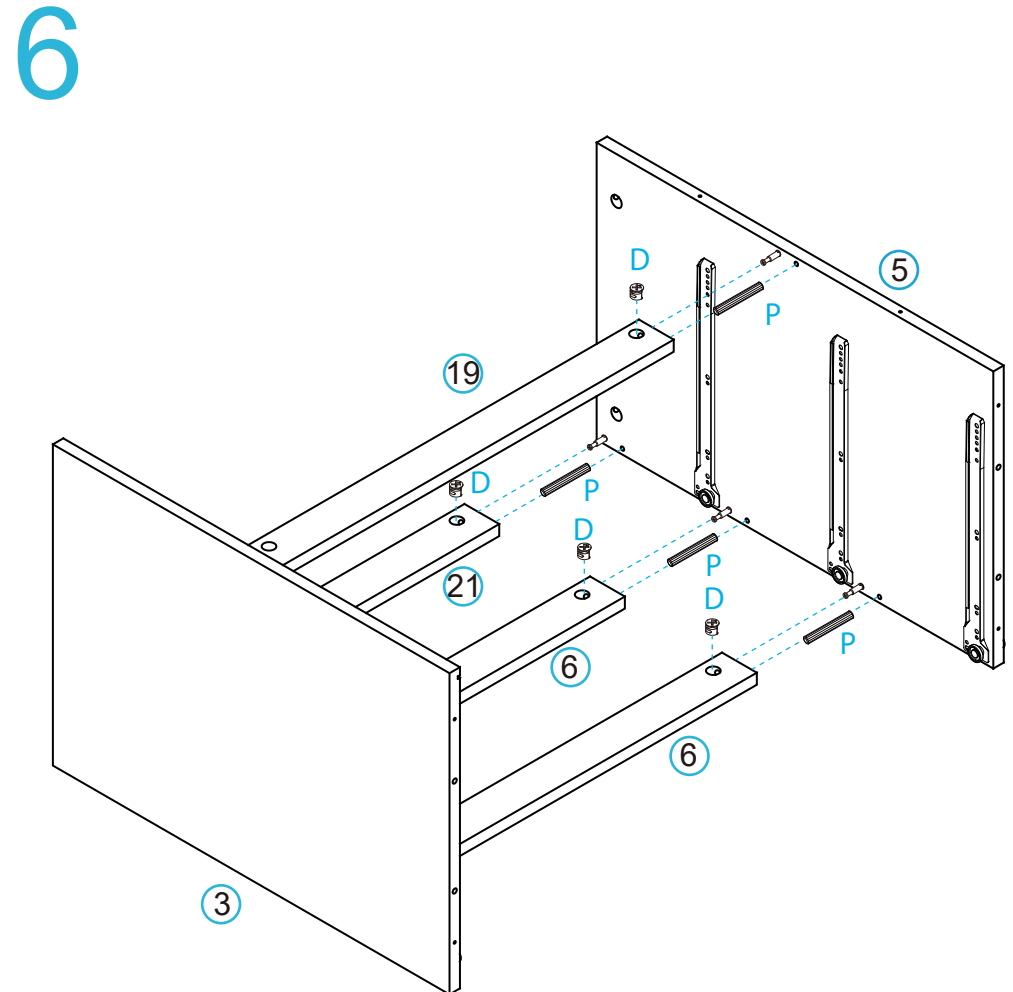
Jesse Six Drawer

Assembly Instructions

mocka



Attach panels [6], [19] and [21] to panel [3] with 4x dowels (A) and secure with 4x locking nuts (D). Tighten with a screwdriver.

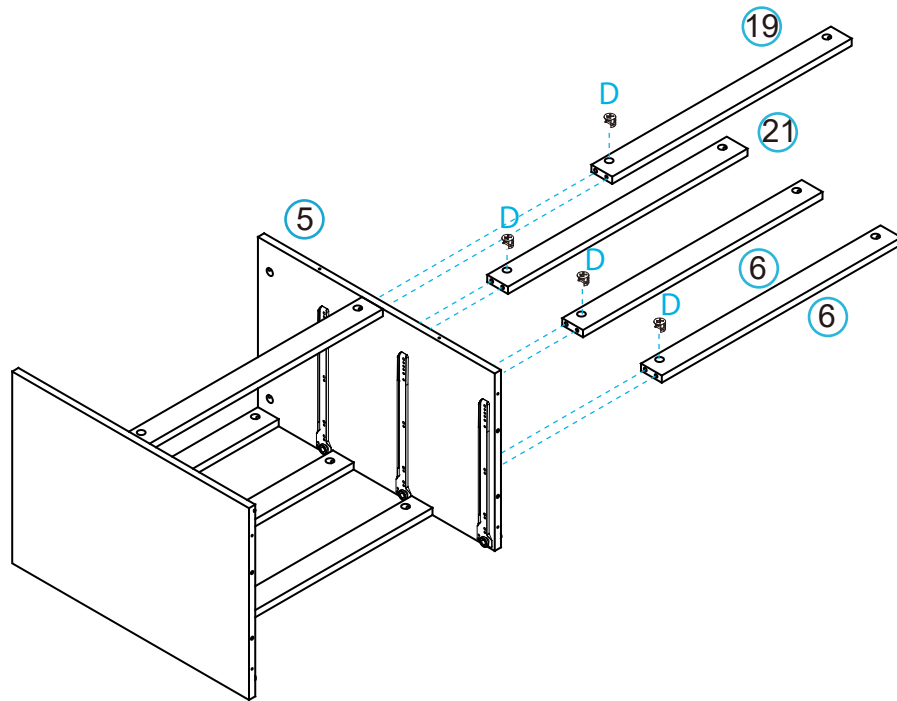


Attach panel [5] to panels [6], [19] and [21] with 4x long dowels (P) and secure with 4x locking nuts (D). Tighten with a screwdriver.

Jesse Six Drawer

Assembly Instructions

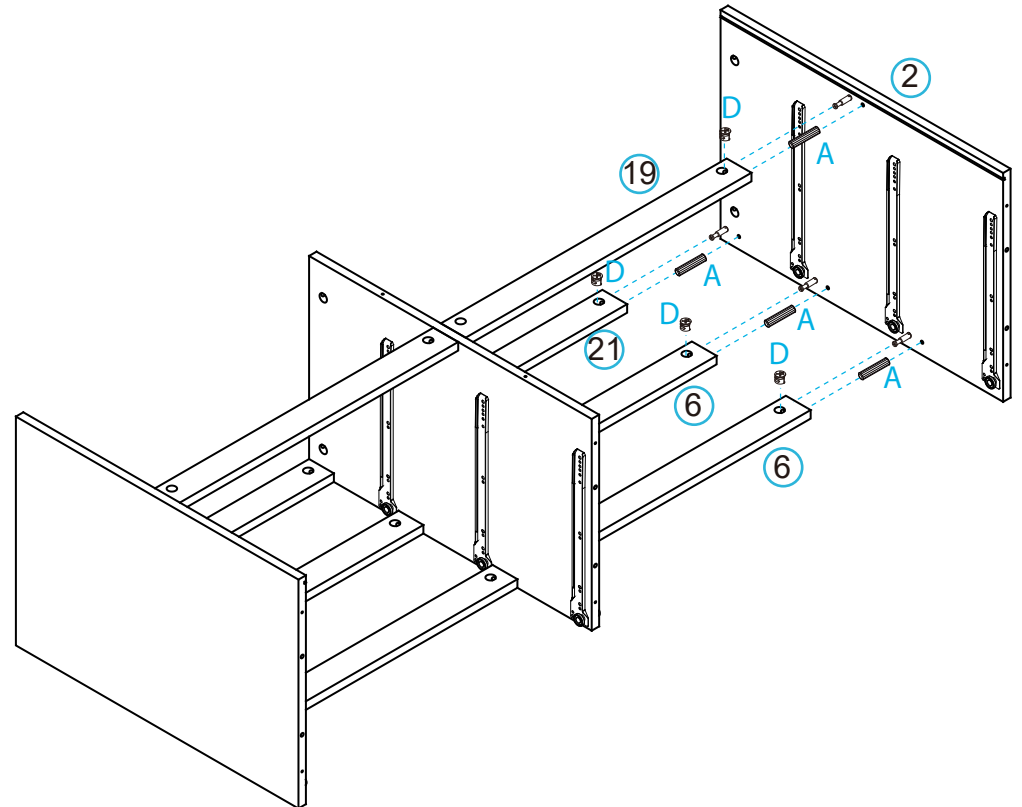
7



Attach panels [6], [19] and [21] to panel [5] secure with 4x locking nuts (D). Tighten with a screwdriver.

mocka

8

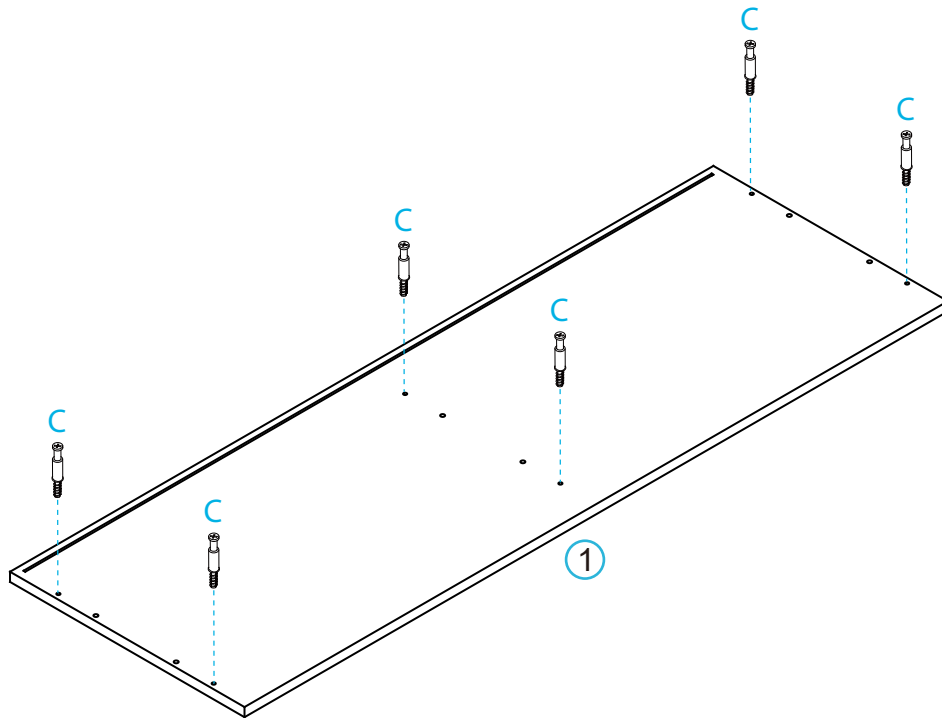


Attach panel [2] to panels [6], [19] and [21] with 4x dowels (A) and secure with 4x locking nuts (D). Tighten with a screwdriver.

Jesse Six Drawer

Assembly Instructions

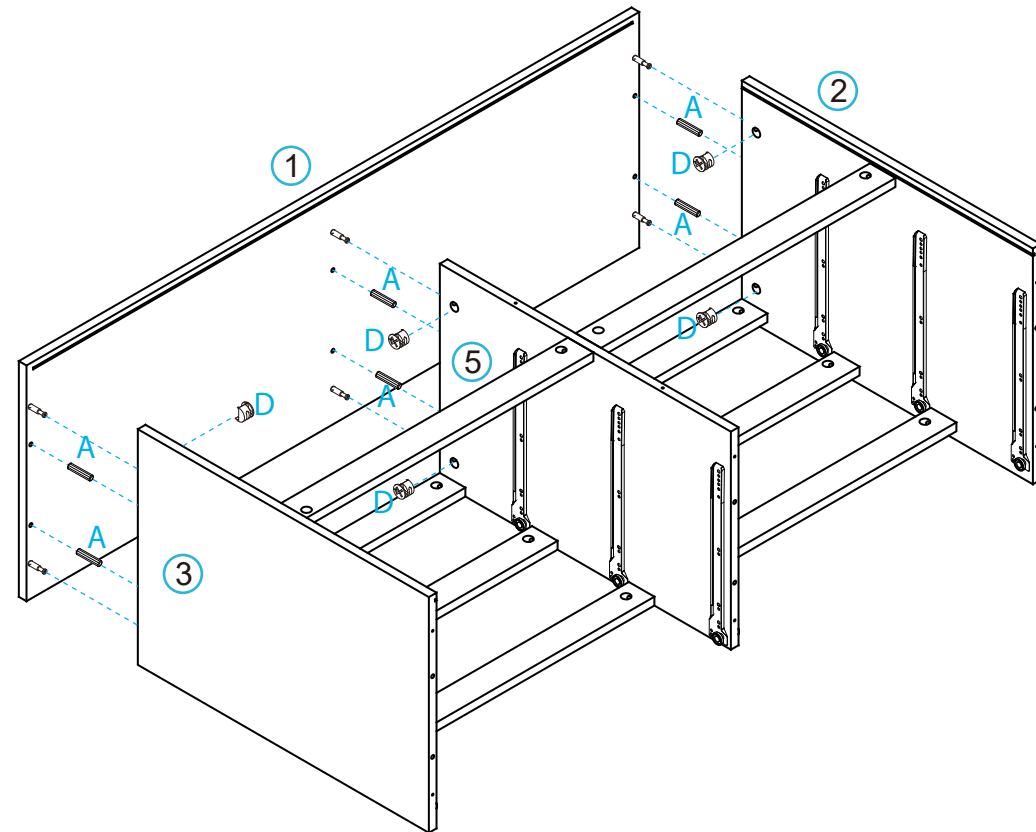
9



Insert 6x bolts (C) into panel [1]. Tighten with a screwdriver.

mocka

10



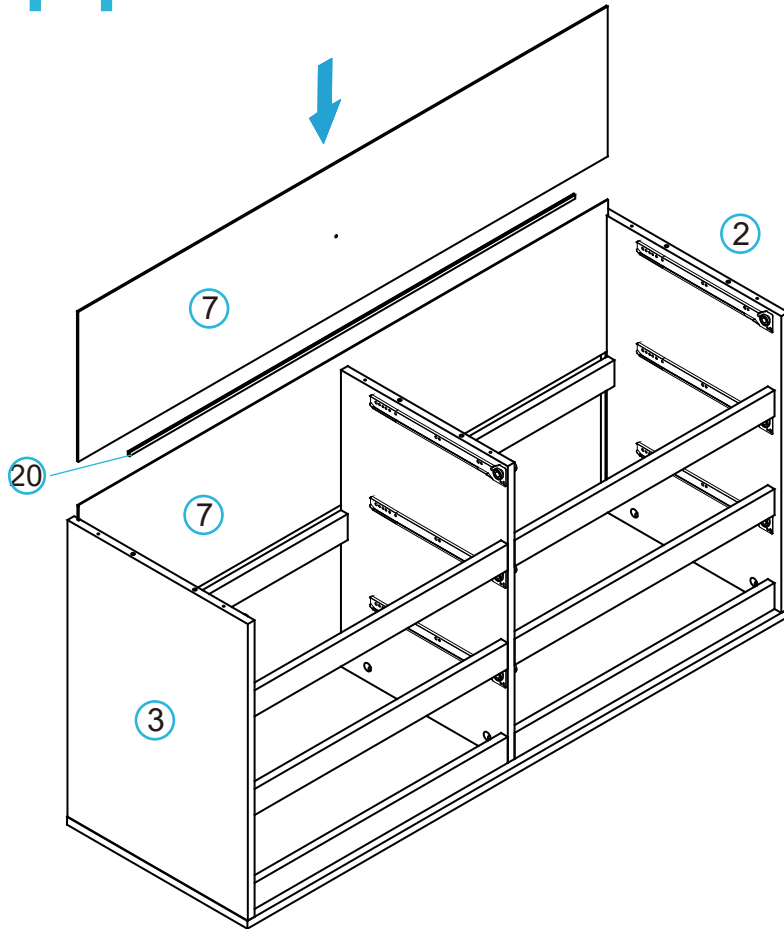
Attach panel [1] to panels [2], [3] and [5] with 6x dowels (A) and secure with 6x locking nuts (D). Tighten with a screwdriver.

Jesse Six Drawer

Assembly Instructions

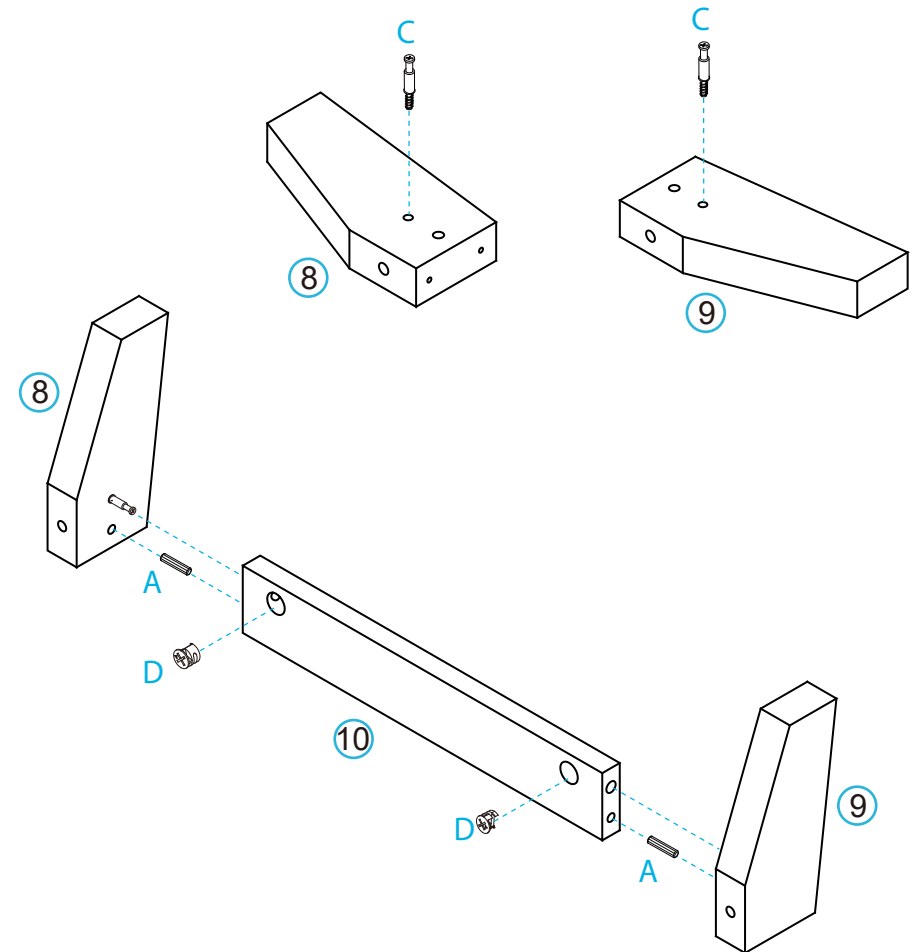
mocka

11



Insert connector stick [20] to join panels [7]. Slide panels [7] down along the grooves between the panels [2] and [3] to form the back of the unit as shown.

12x2



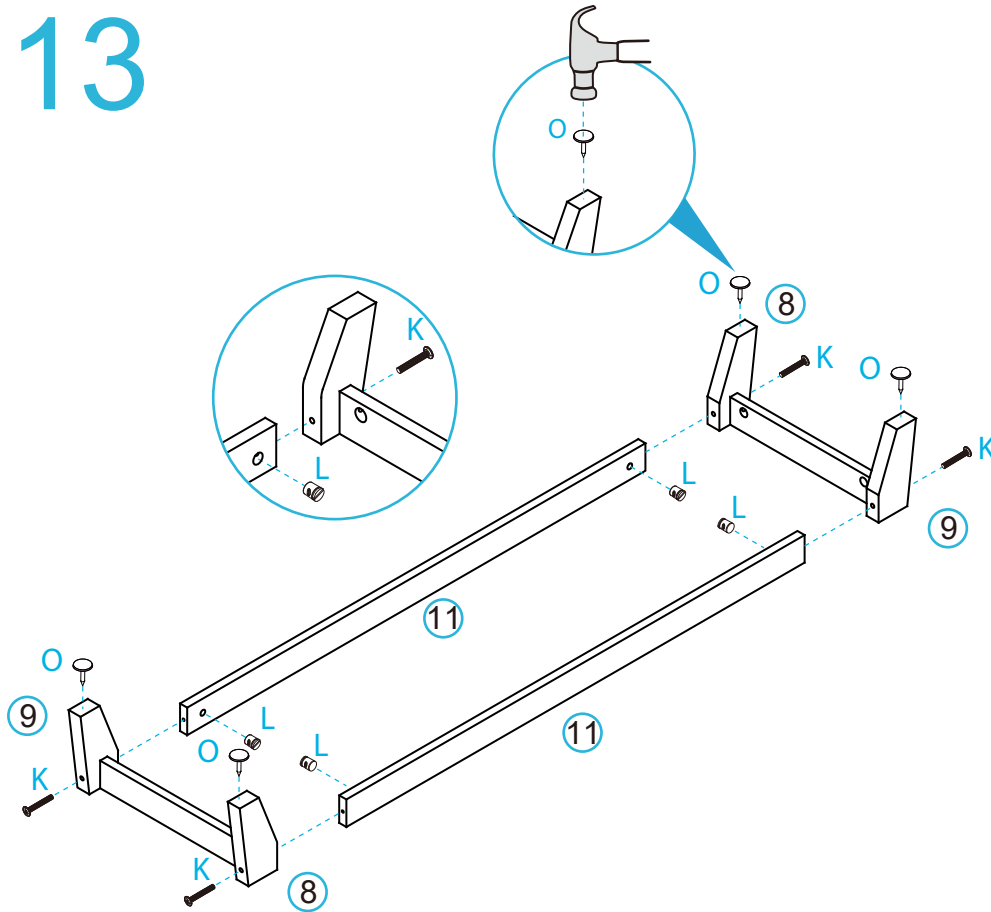
Insert 2x bolts (C) into panels [8] and [9]. Attach panels [8] and [9] to panel [10] with 2x dowels (A) and secure with 2x locking nuts (D). Tighten with a screwdriver.

Jesse Six Drawer

Assembly Instructions

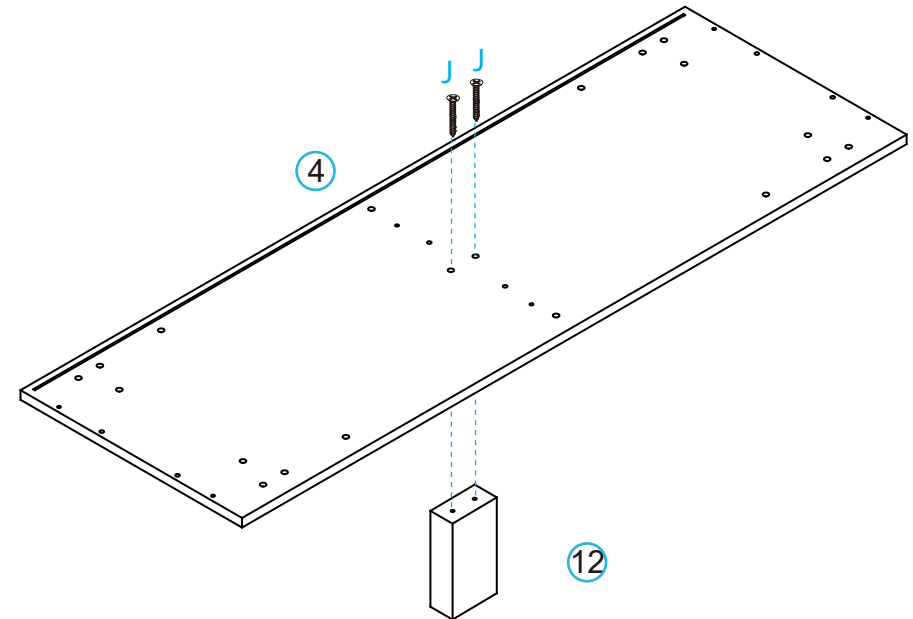
mocka

13



Attach panels [8] and [9] to panels [11] using 4x cam bolt (K) and secure with 4x cam nuts (L). Tighten with a screwdriver. Attach 4x plastic glides (O) into the panels [8] and [9] with a hammer as shown.

14



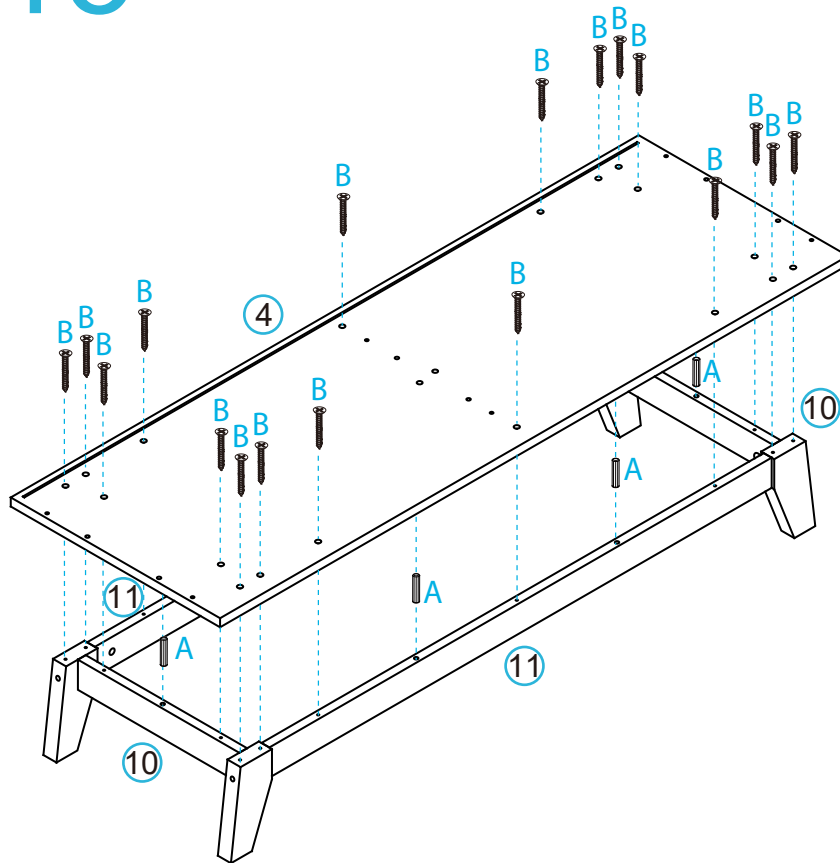
Attach panel [12] to panel [4] with 2x long screw (J) and secure. Tighten with a screwdriver.

Jesse Six Drawer

Assembly Instructions

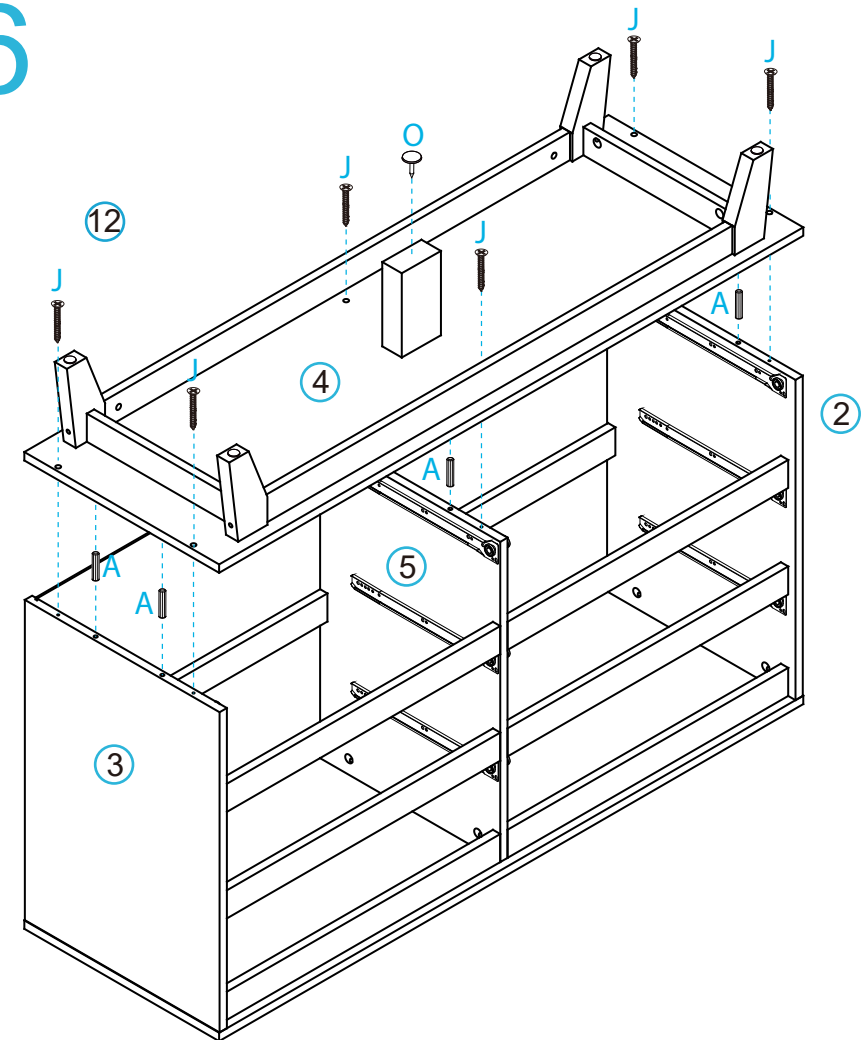
mocka

15



Attach panel [4] to leg panels with 6x dowels (A) and secure with 18x screws (B). Tighten with a screwdriver.

16



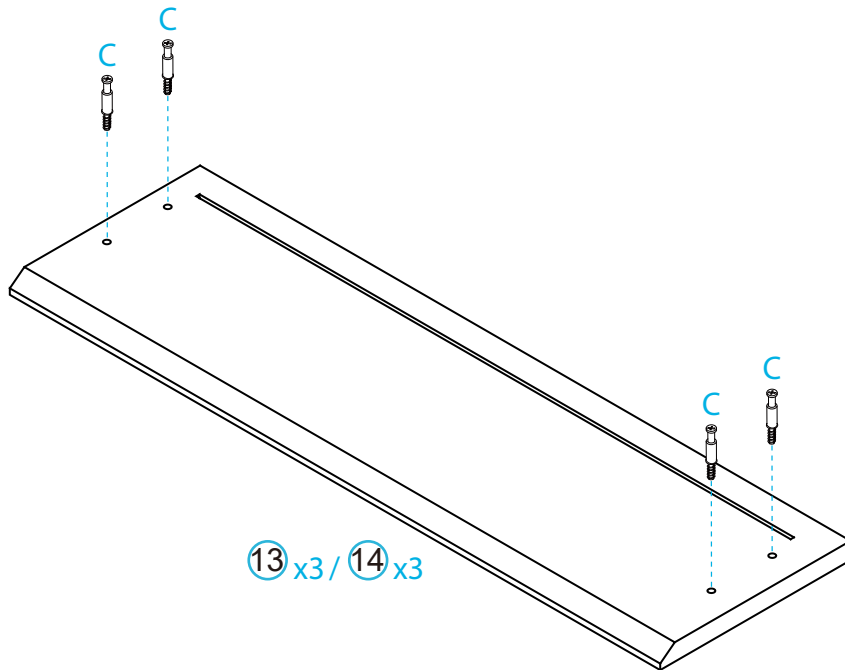
Attach panel [4] to the unit with 6x dowels (A) and secure with 6x long screws (J). Tighten with a screwdriver. Attach 1x plastic glide (O) into the panel [12] with a hammer as shown.

Jesse Six Drawer

Assembly Instructions

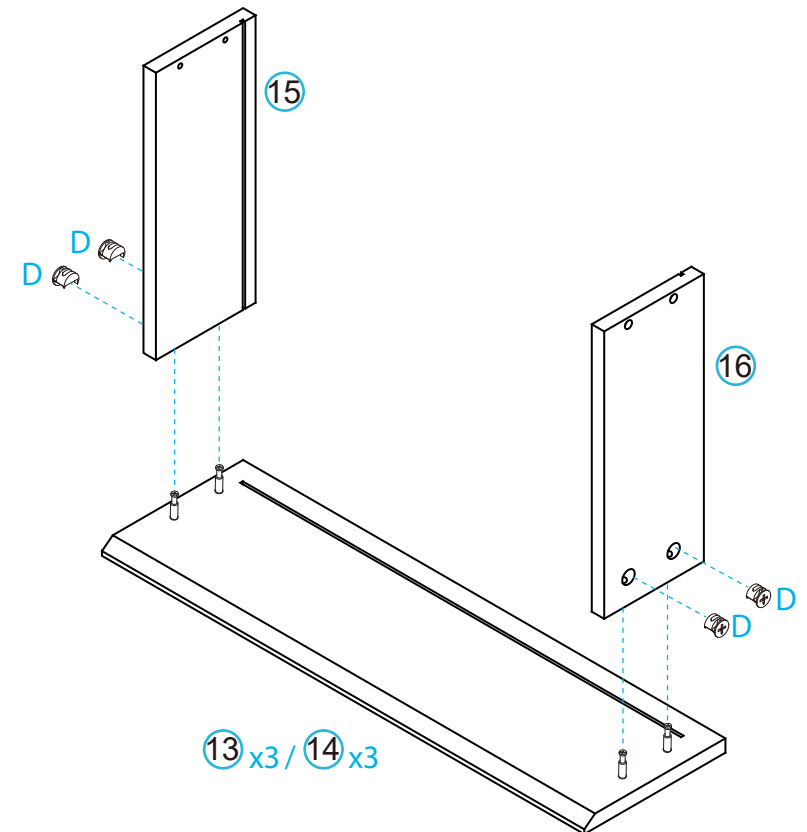
mocka

17 Drawers x6



Insert 4x bolts (C) into panels [13] and [14]. Tighten with a screwdriver.

18 Drawers x6

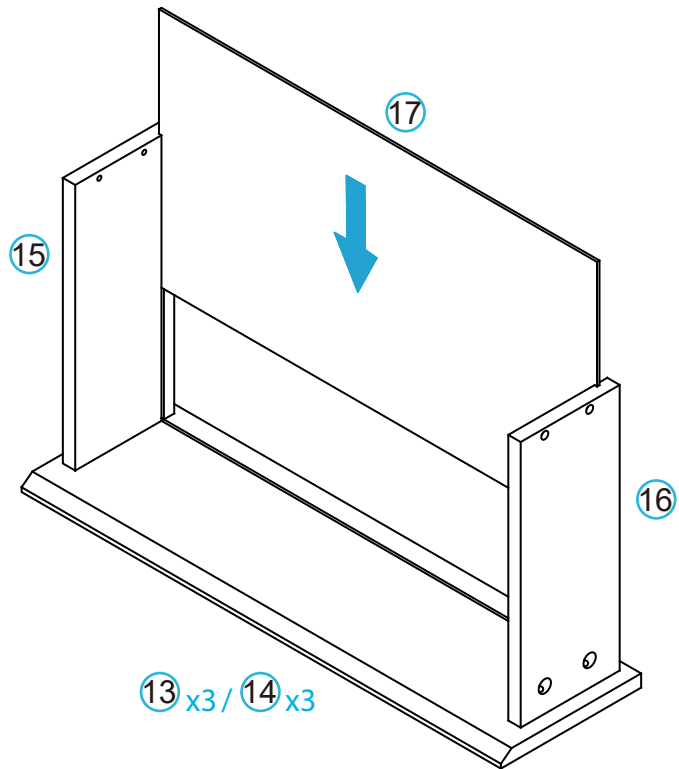


Attach panels [15] and [16] to front panels [13] and [14] using 4x locking nuts (D). Tighten with a screwdriver.

Jesse Six Drawer

Assembly Instructions

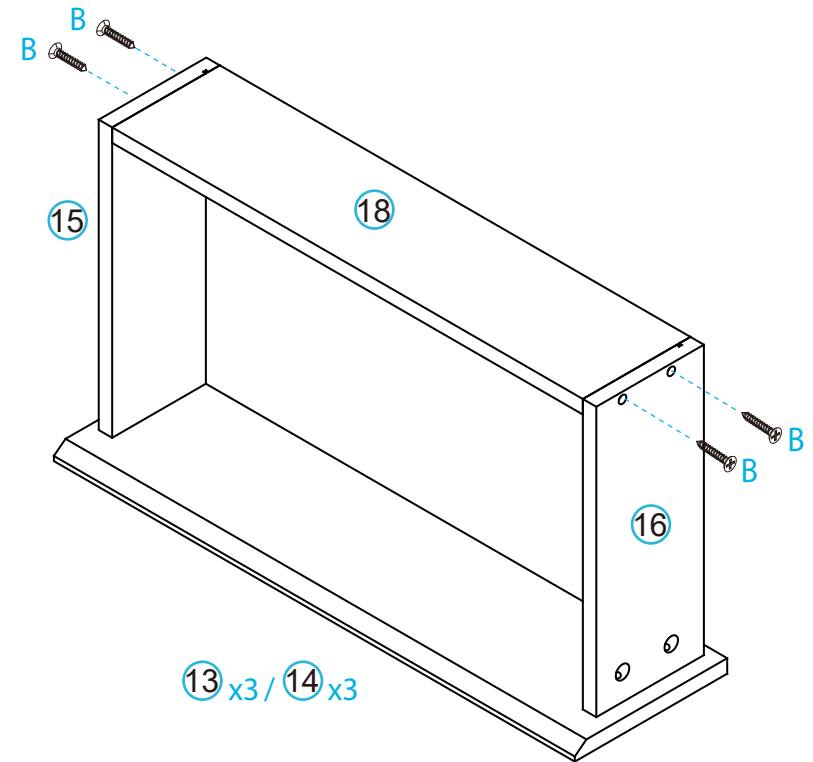
19 Drawers x6



Slide panel [17] along the grooves between the side panels [15] and [16] to form the base of the drawer.

mocka

20 Drawers x6



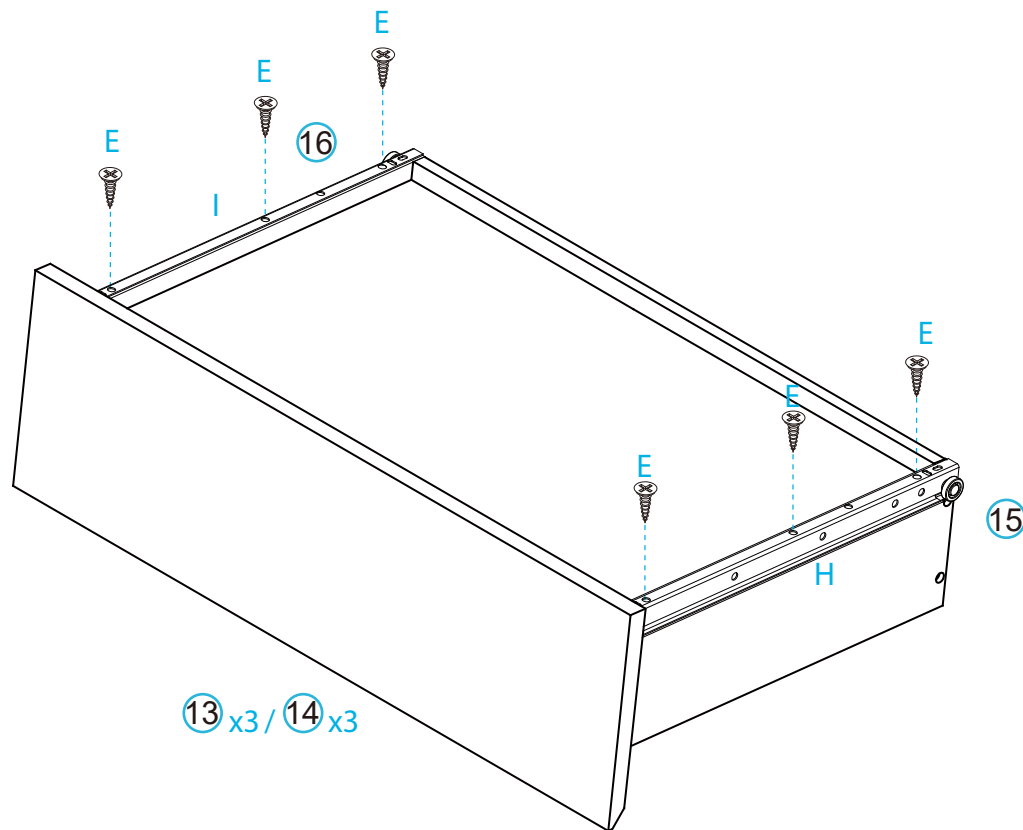
Attach panels [15], [16] and [18] as shown using 4x screws (B). Tighten with a screwdriver.

Jesse Six Drawer

Assembly Instructions

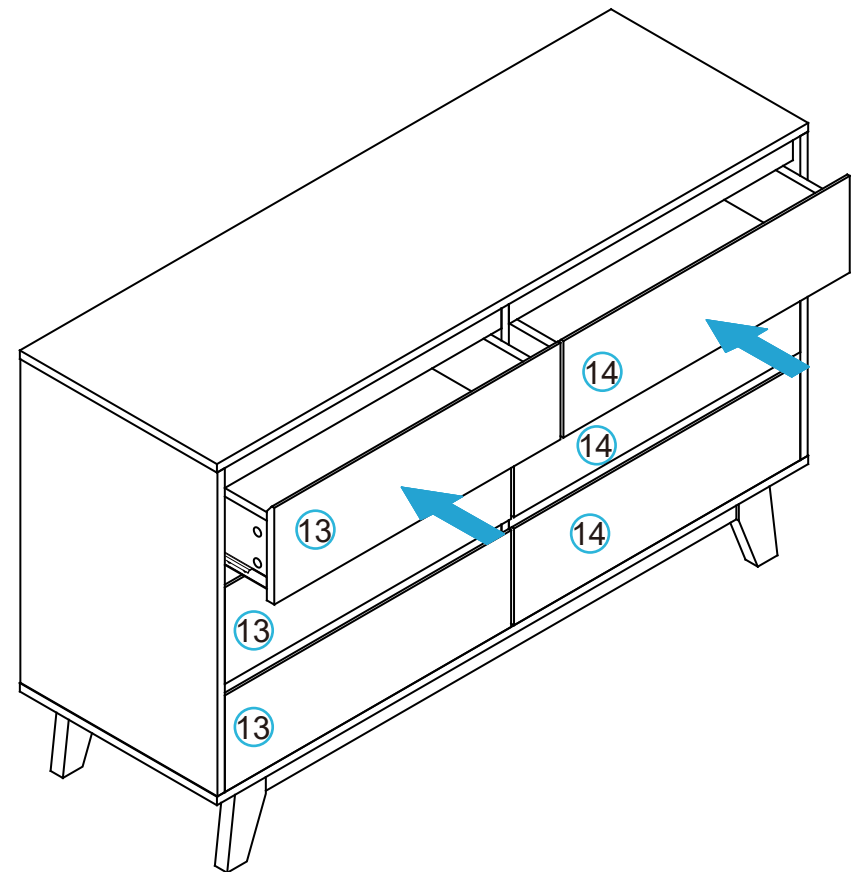
mocka

21 Drawers x6



Attach DR runners (I) and DL runners (H) to the underside of panels [15] and [16] as shown. Secure with 6x screws (E) and tighten with a screwdriver. Complete the other three drawers.

22 Drawers x6

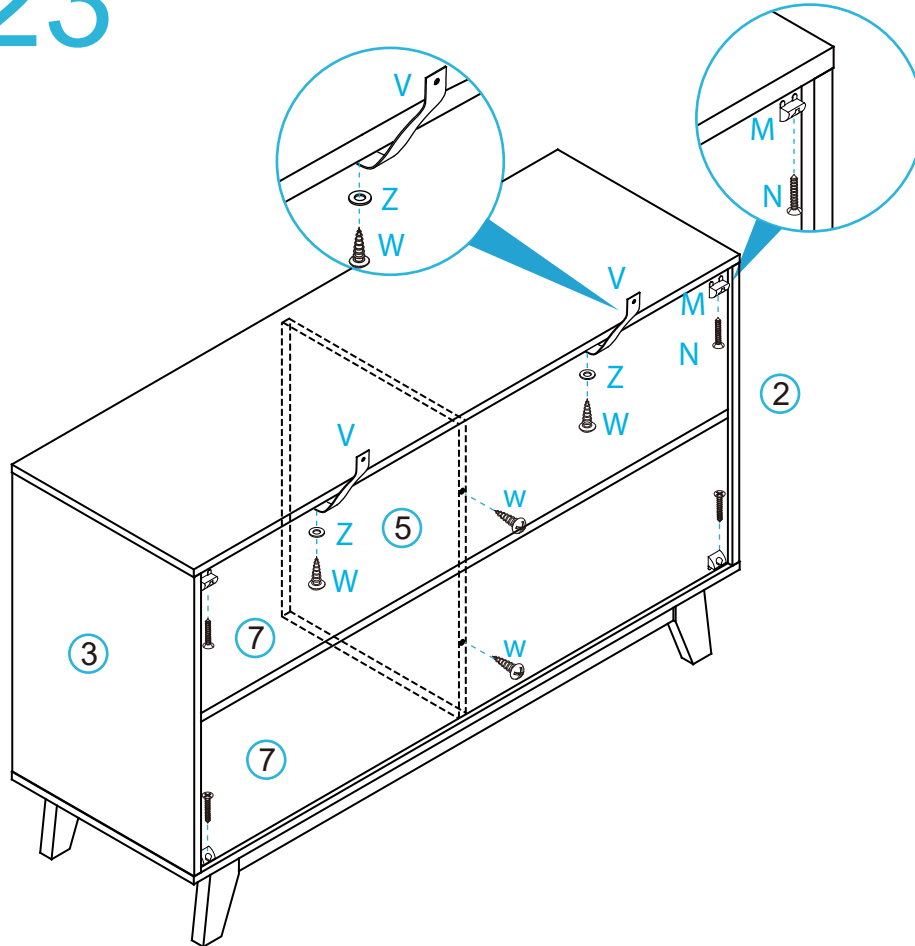


Insert the assembled drawers into the corresponding compartments as shown. Ensure the drawers slide easily along the rails.

Jesse Six Drawer

Assembly Instructions

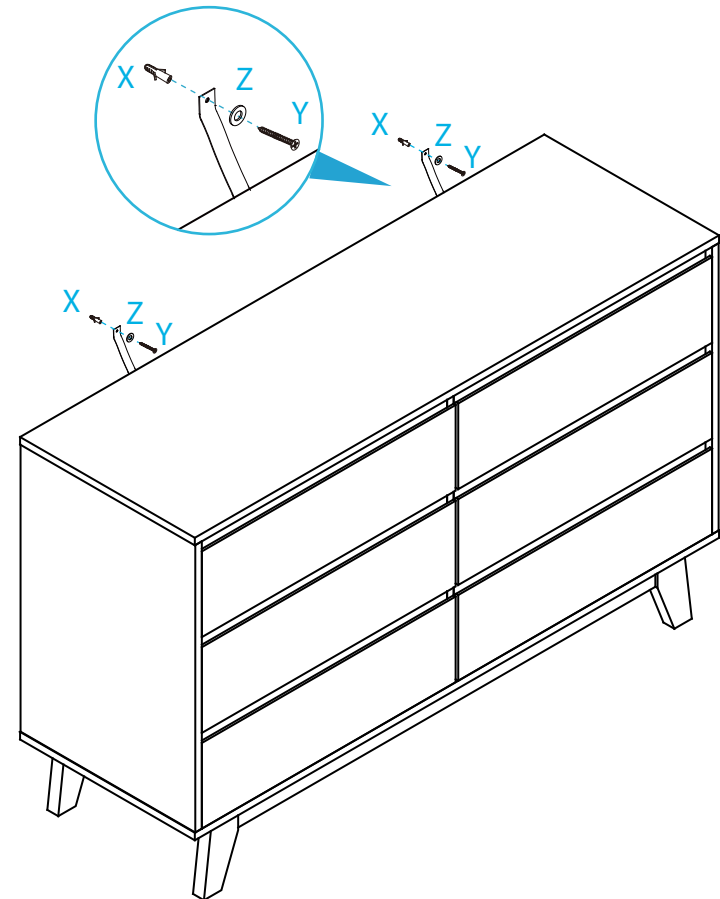
23



Attach 4x wedges (M) into the corners of the back of the unit and secure with 4x screws (N). Tighten with a screwdriver. Attach 2x safety straps (V) to the top of the back side of the unit as shown using 2x washers (Z) and 2x screws (W). Tighten with a screwdriver. Attach panels [7] to panel [5] as shown using 2x screws (W). Tighten with a screwdriver.

mocka

24



Once assembled lift furniture into place, do not drag. Use a drill to create a small hole lining up with the top of the safety strap (V). Fasten to the wall using 2x washers (Z), 2x wall anchors (X) and 2x screws (Y). Ensure unit is balanced and steady before use. You're done, enjoy!